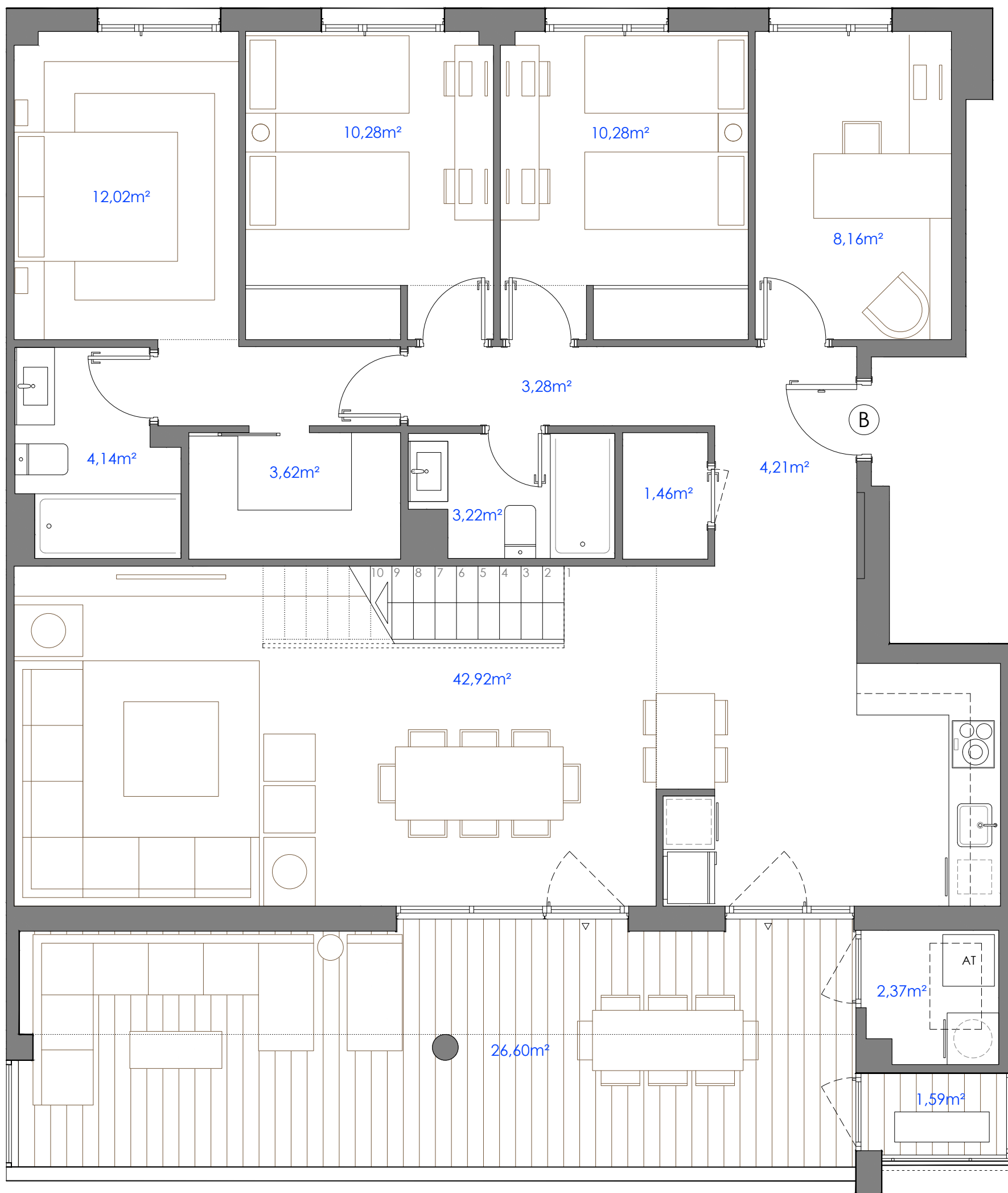
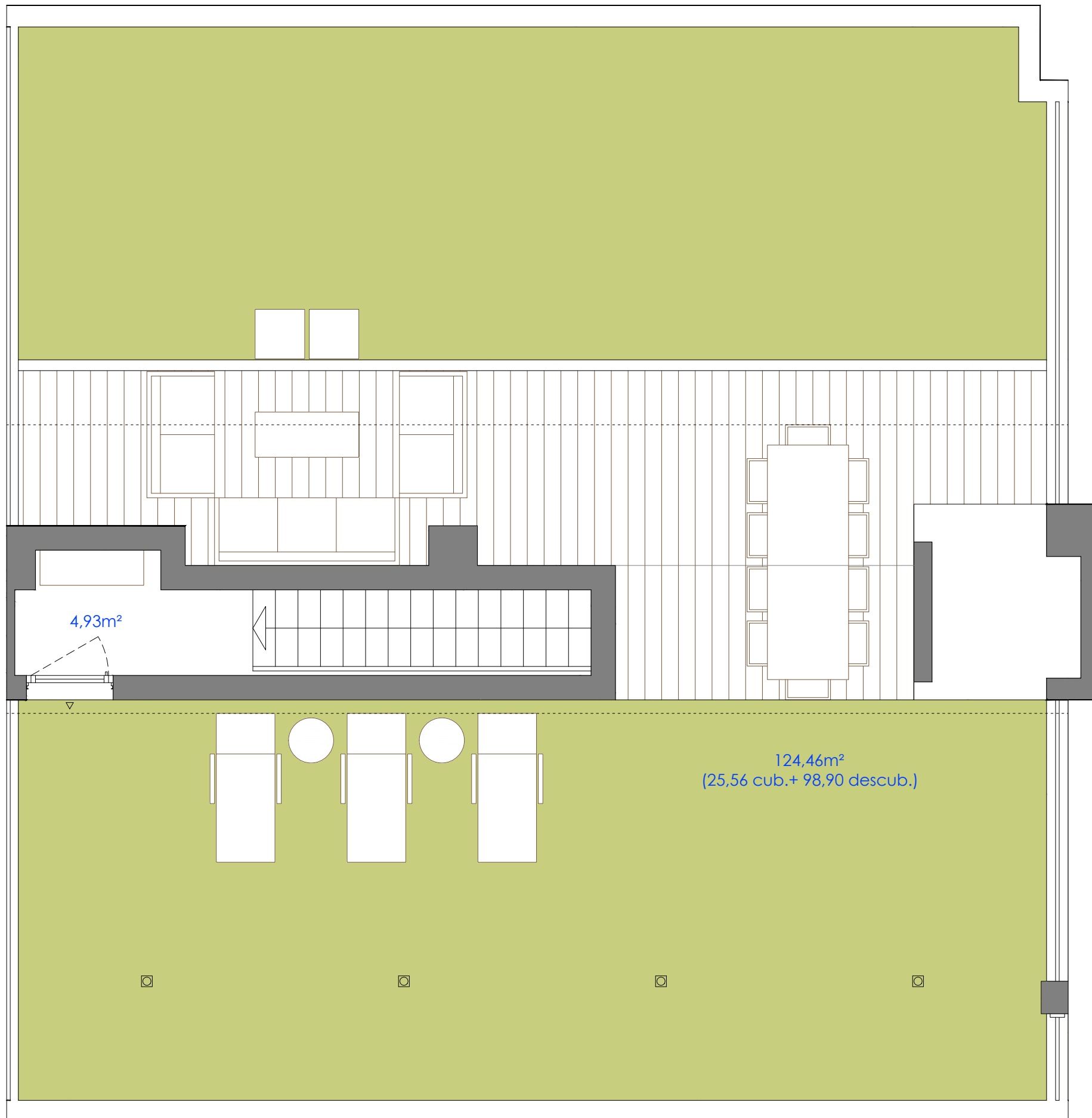


S.útil cerrada	=	110,89 m <sup>2</sup>
S.útil abierta	=	28,19 m <sup>2</sup>
S.útil total	=	139,08 m <sup>2</sup>
S.útil abierta desc.	=	124,46 m <sup>2</sup>
Total pisable	=	263,54 m <sup>2</sup>



S.útil cerrada	=	110,89 m <sup>2</sup>
S.útil abierta	=	28,19 m <sup>2</sup>
S.útil total	=	139,08 m <sup>2</sup>
S.útil abierta desc.	=	124,46 m <sup>2</sup>
Total pisable	=	263,54 m <sup>2</sup>



Escala (m) 1:50 (dinA3)

